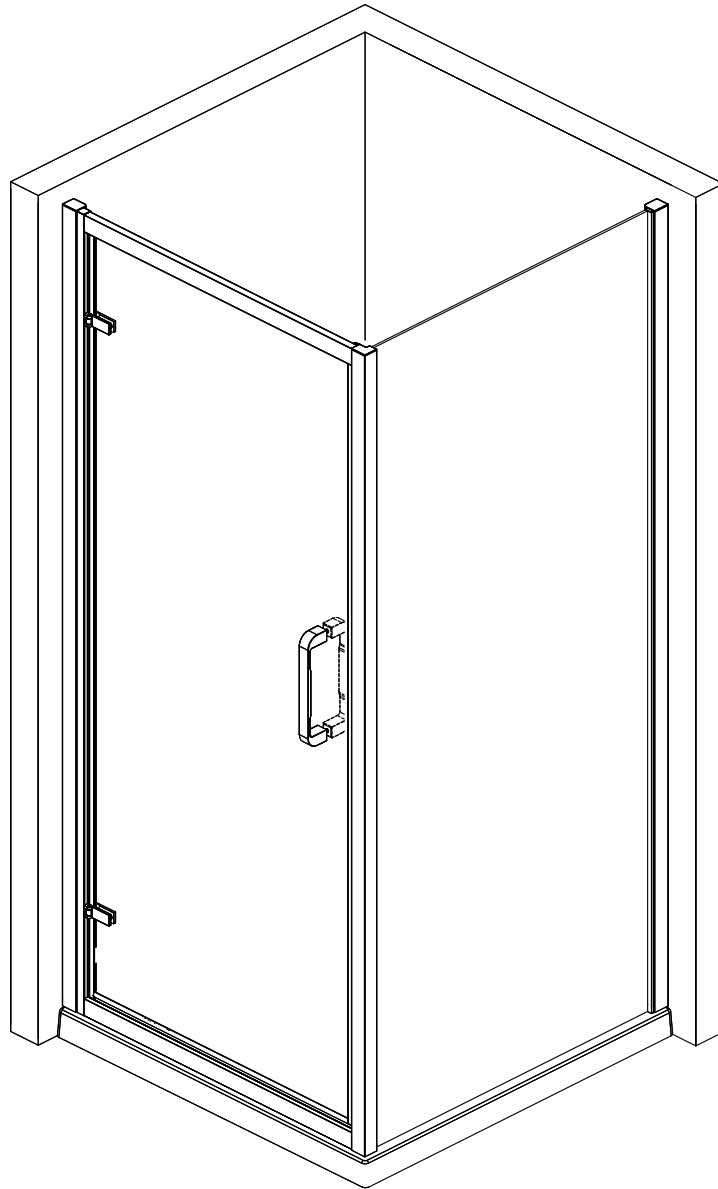
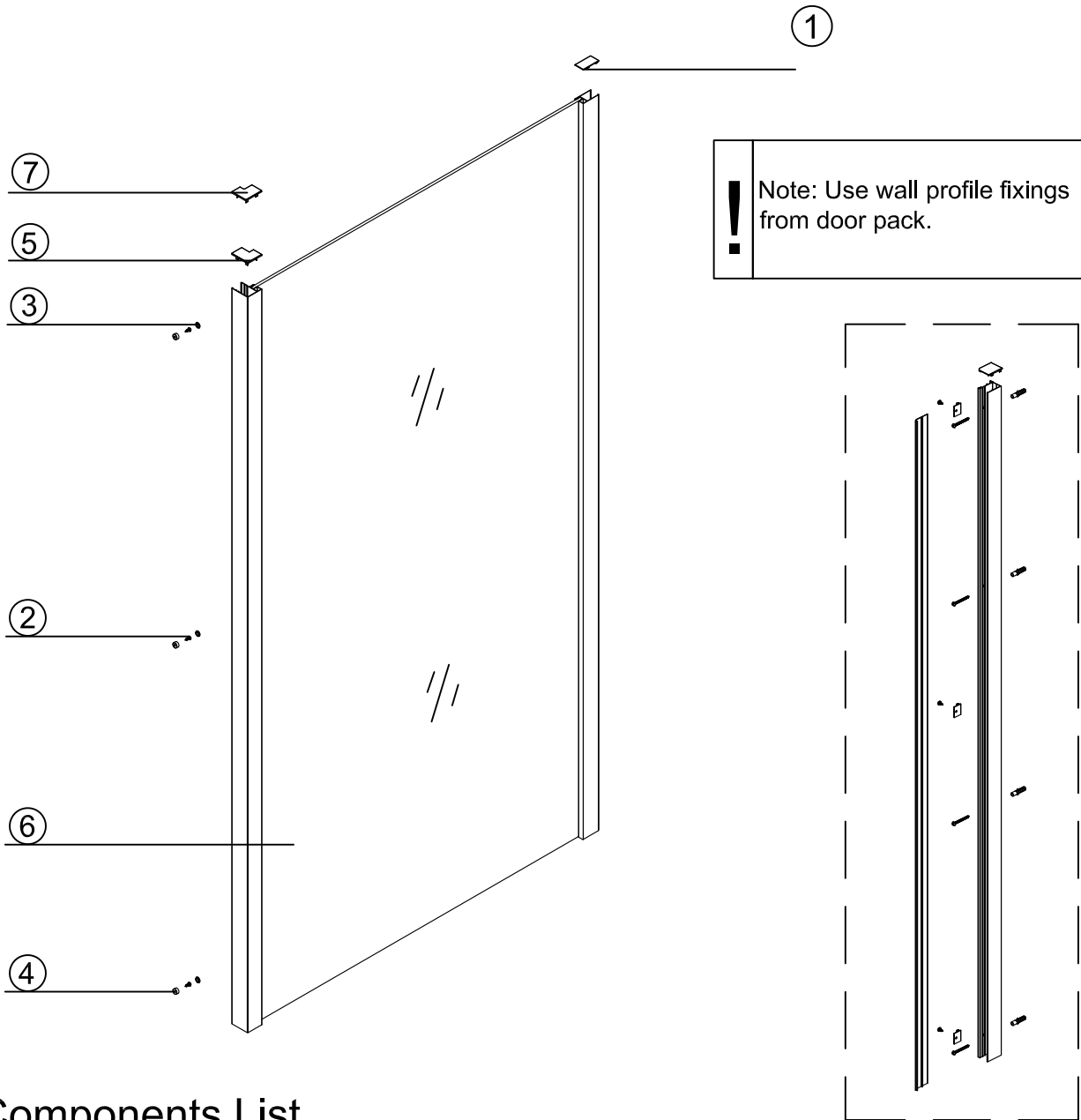


INSTALLATION INSTRUCTION
New Luxury Side Panel
(For use With Hinged, Sliding and Bifold Doors)










If you need further help please contact your local depot www.ctb.co.uk

Parts Identification



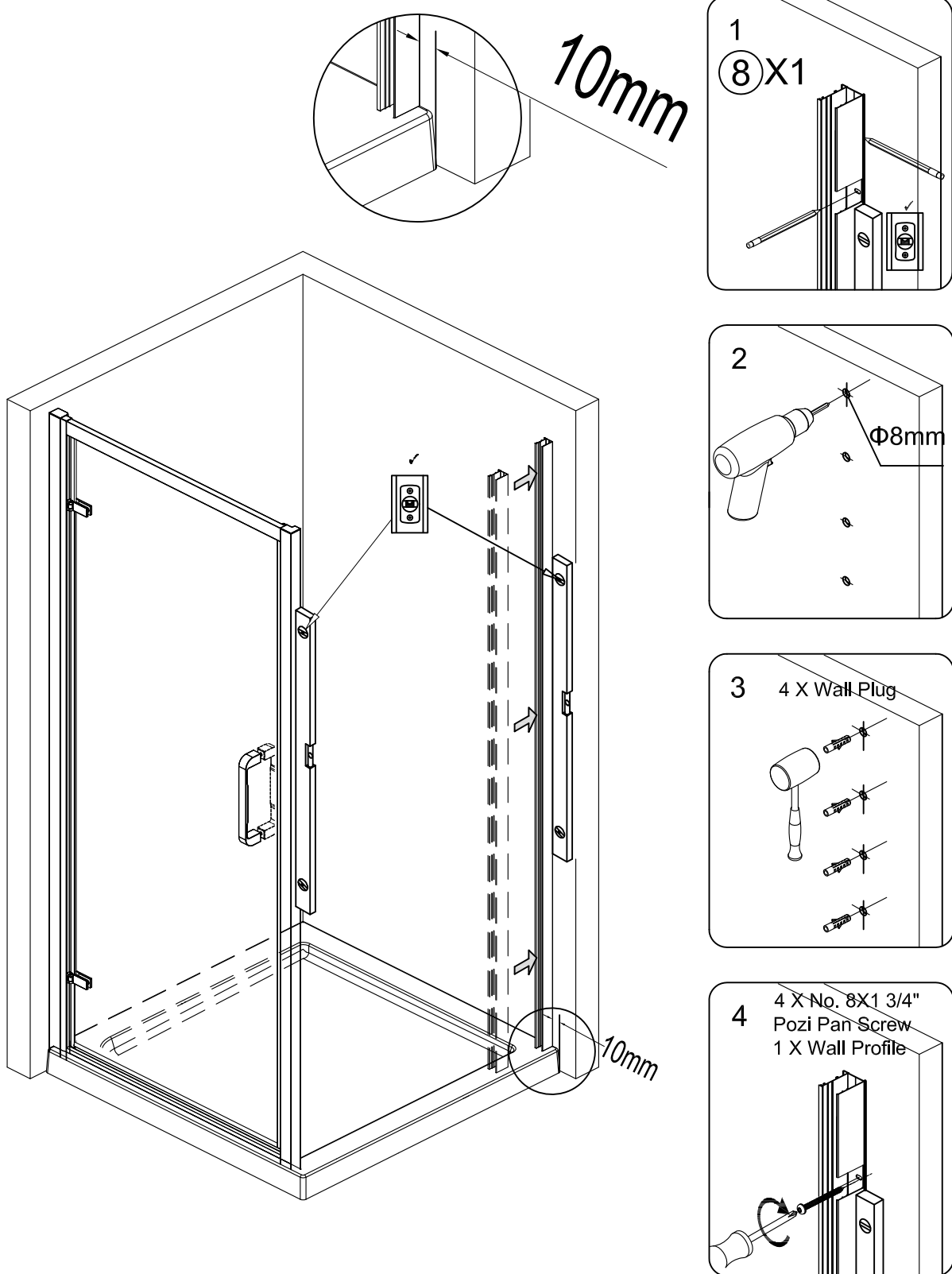
Components List

N0.	Drawing	Description	Qty
1		Wall profile cap	1
2		No8x 3/8" Pozi Pan Screw	3
3		Screw Cap top	3
4		Screw Cap base	3
5		Corner profile RH cap	1
6		Fixed panel	1
7		Corner profile LH cap	1

If you need further help please contact your local depot www.ctb.co.uk

Installation

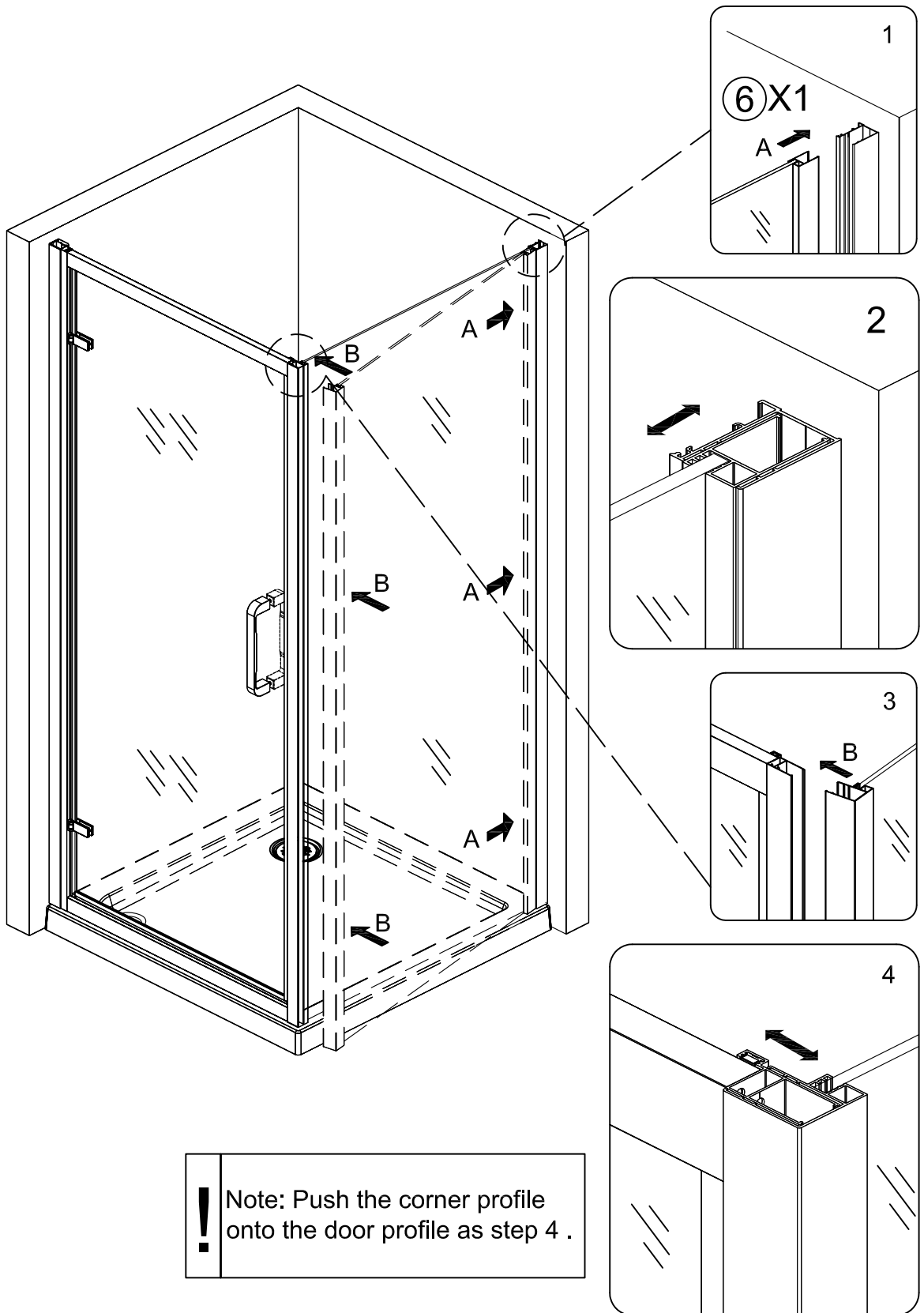
Wall profile from door pack side panel installation



If you need further help please contact your local depot www.ctb.co.uk

Installation

Slide side panel into wall profile and locate onto door
(Hinged Door or Bifold Door or Slider Door)

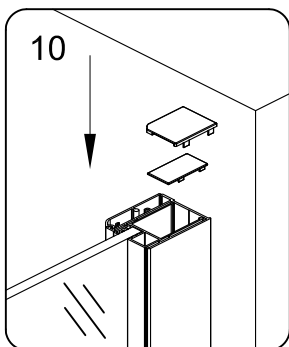
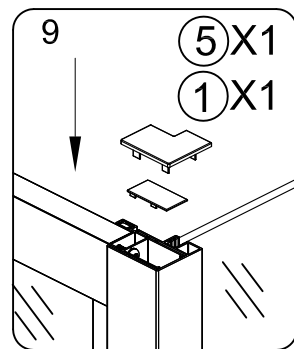
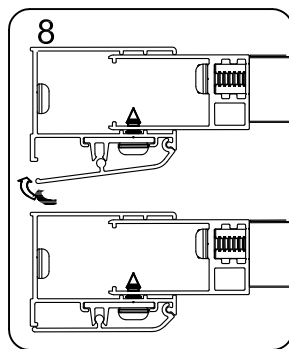
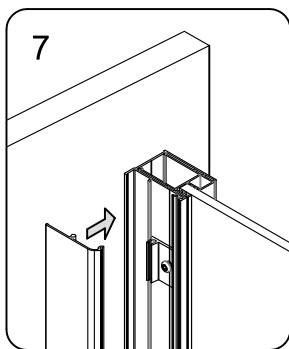
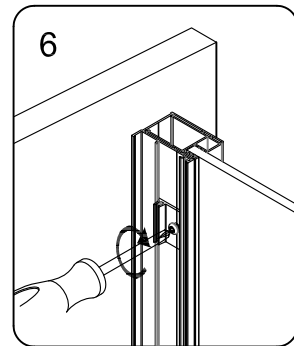
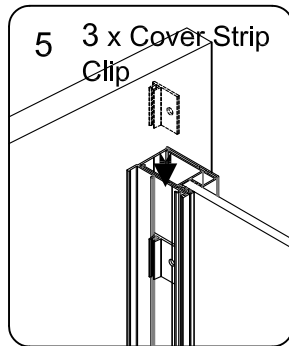
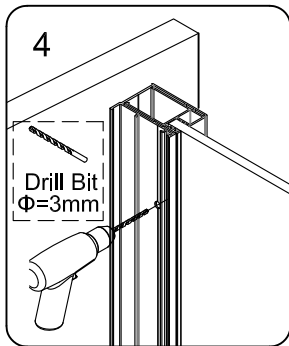
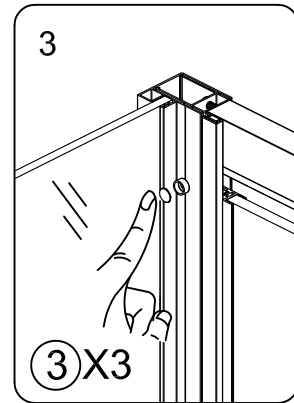
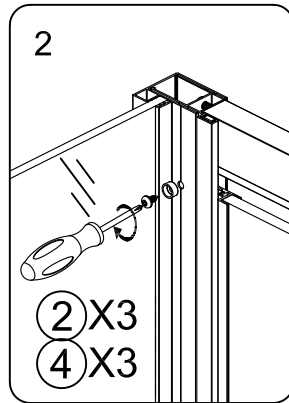
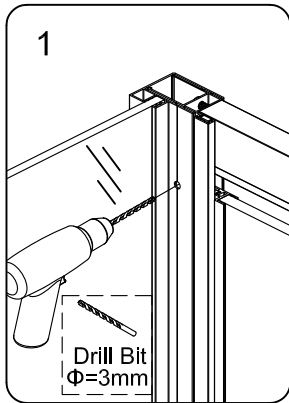


! Note: Push the corner profile onto the door profile as step 4 .

If you need further help please contact your local depot www.ctb.co.uk

Installation

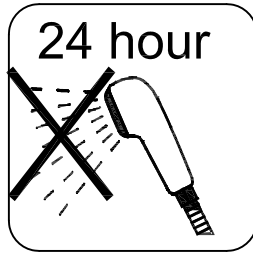
Inside View



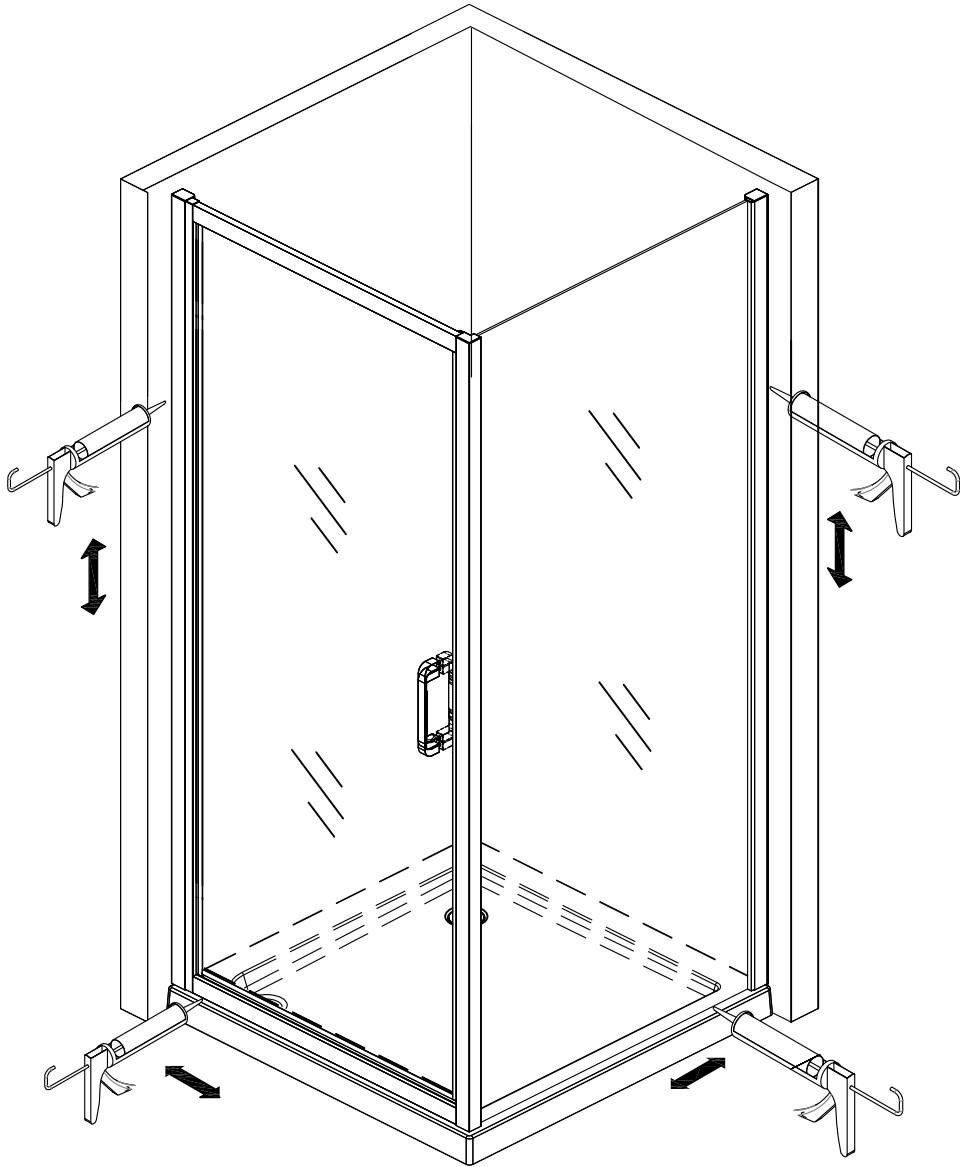
! Note: Parts not referenced are supplied with the door pack

If you need further help please contact your local depot www.ctb.co.uk

Sealing



! Apply silicone between wall and wall channel, bottom rail and tray on the outside of the product.



If you need further help please contact your local depot www.ctb.co.uk