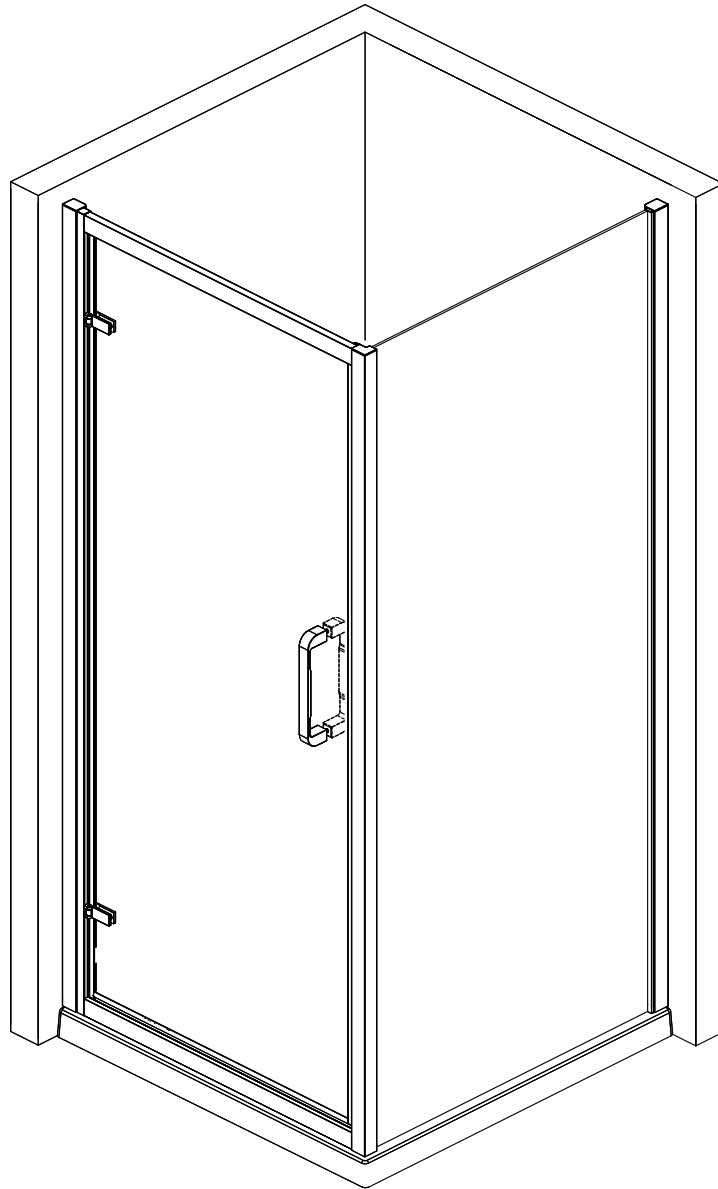
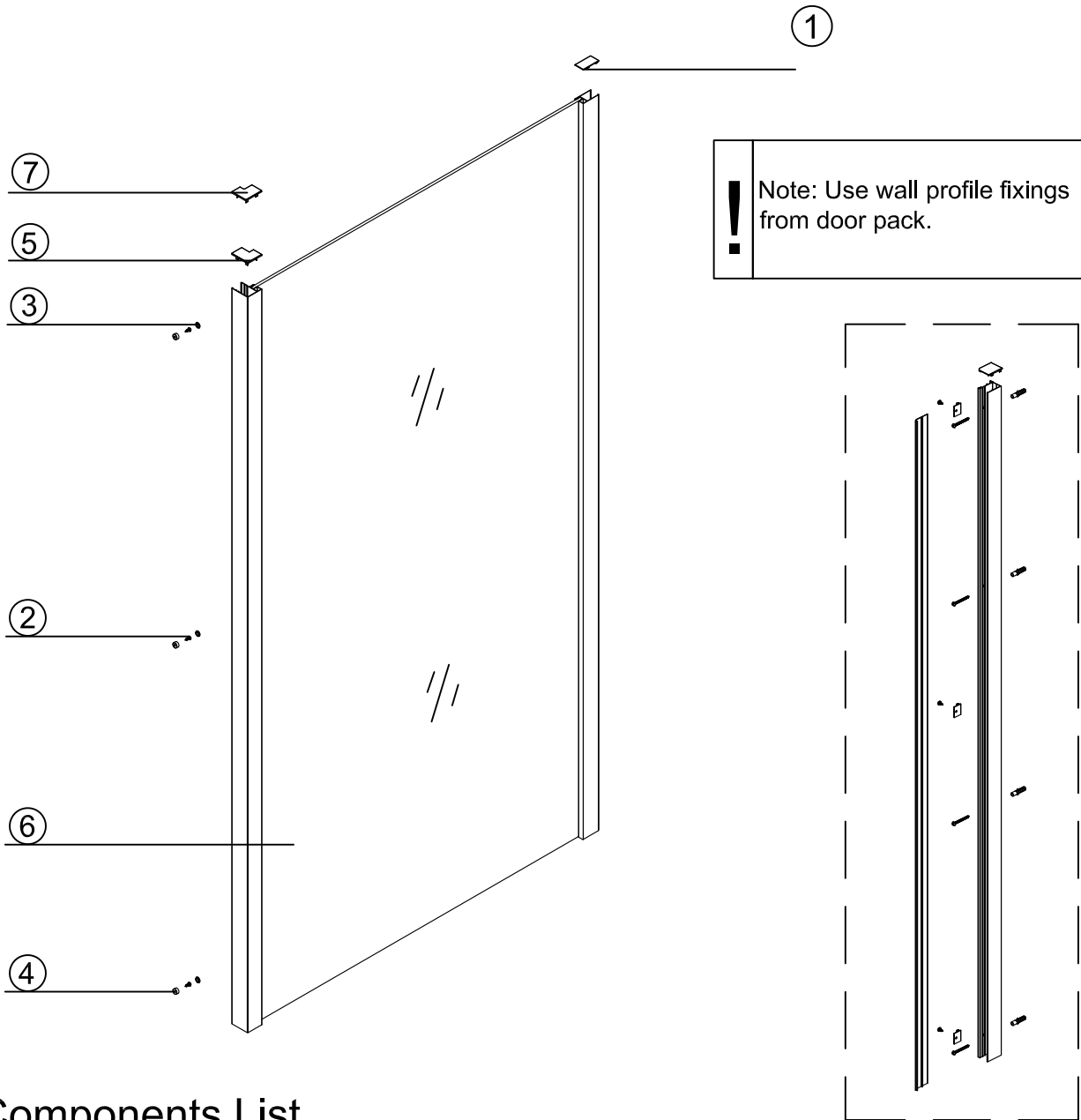


**INSTALLATION INSTRUCTION**  
**New Luxury Side Panel**  
**( For use With Hinged, Sliding and Bifold Doors )**










If you need further help please contact your local depot [www.ctb.co.uk](http://www.ctb.co.uk)

## Parts Identification



**!** Note: Use wall profile fixings from door pack.

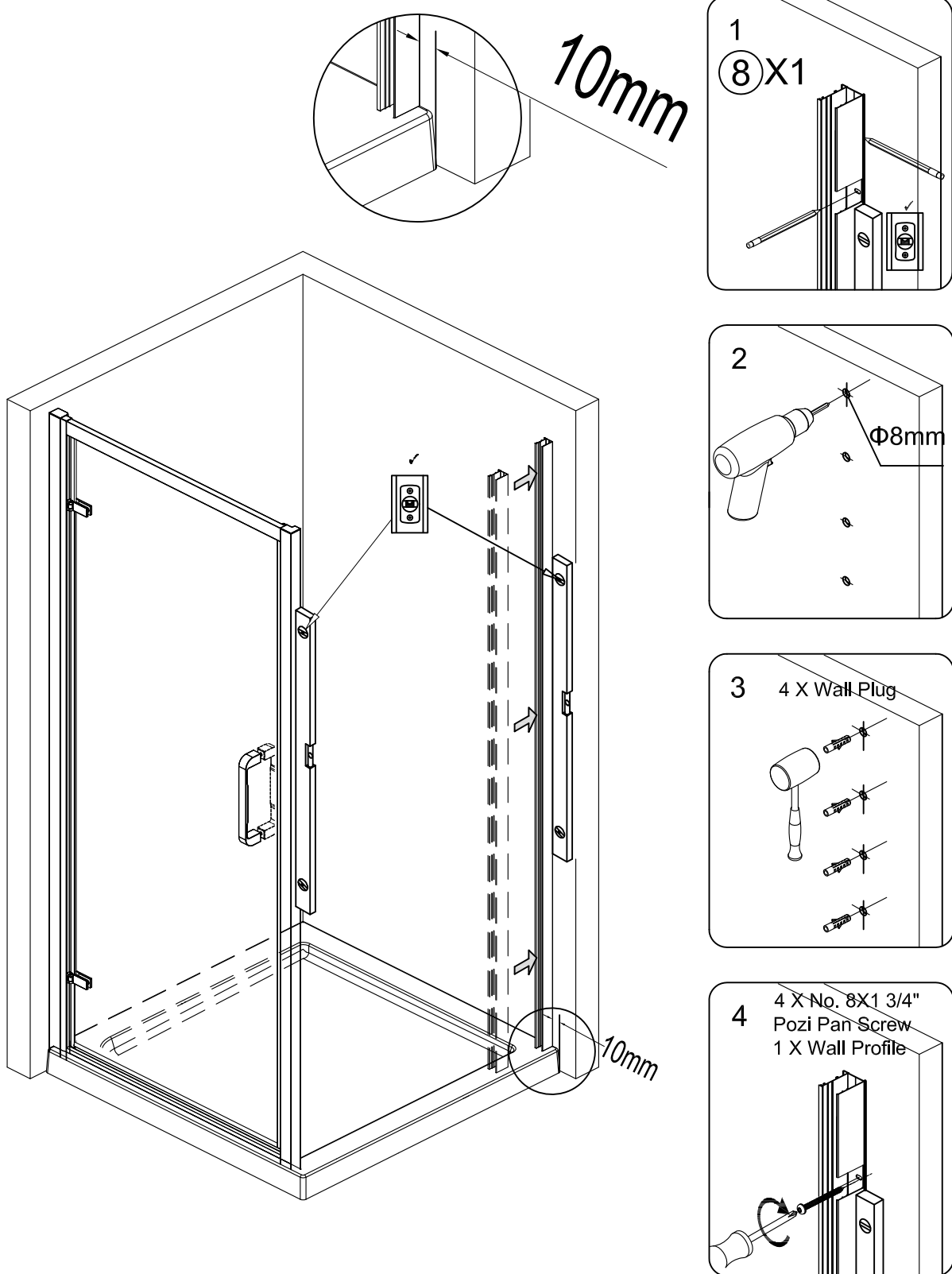
### Components List

N0.	Drawing	Description	Qty
1		Wall profile cap	1
2		No8x 3/8" Pozi Pan Screw	3
3		Screw Cap top	3
4		Screw Cap base	3
5		Corner profile RH cap	1
6		Fixed panel	1
7		Corner profile LH cap	1

If you need further help please contact your local depot [www.ctb.co.uk](http://www.ctb.co.uk)

# Installation

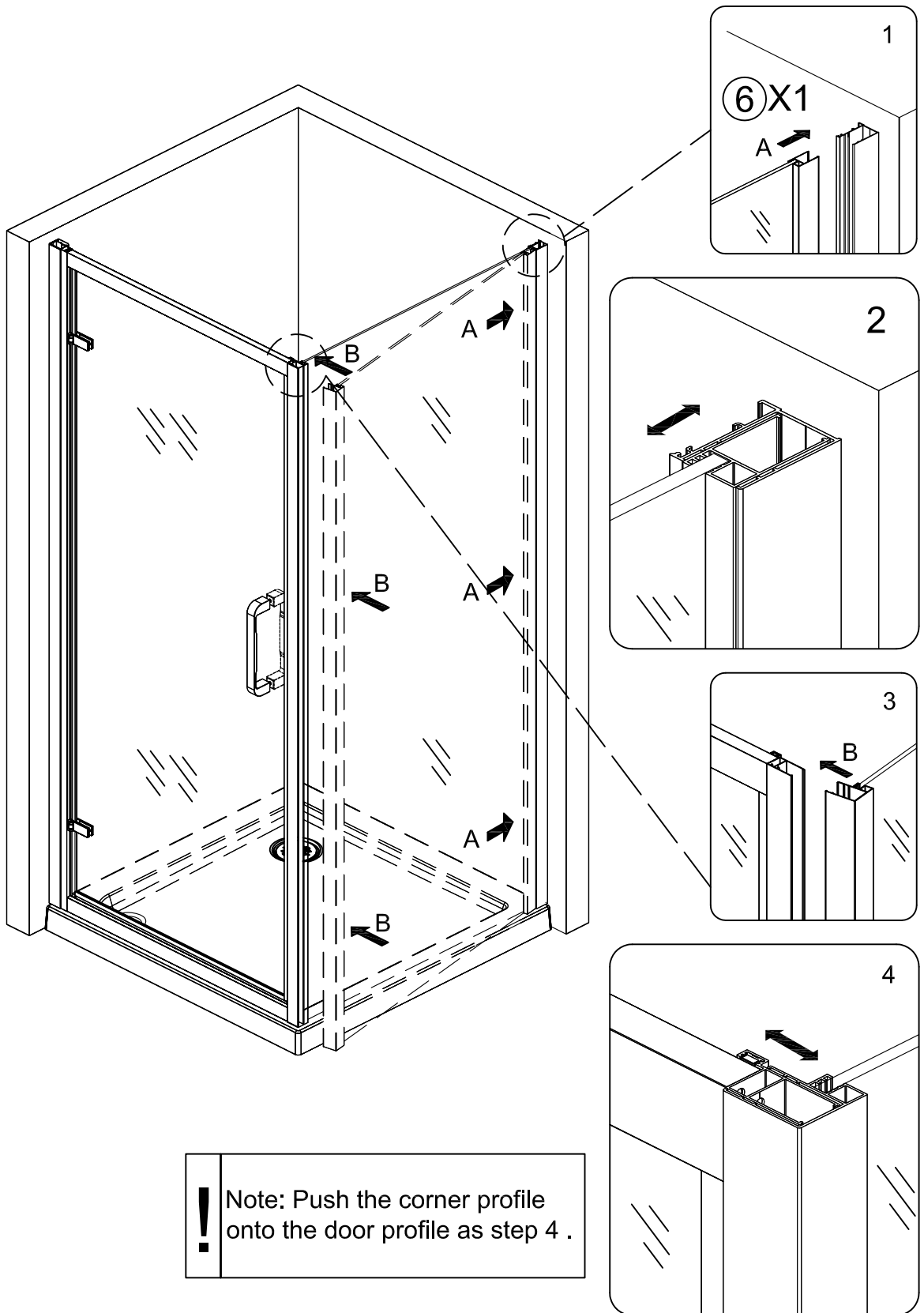
## Wall profile from door pack side panel installation



If you need further help please contact your local depot [www.ctb.co.uk](http://www.ctb.co.uk)

# Installation

Slide side panel into wall profile and locate onto door  
(Hinged Door or Bifold Door or Slider Door)

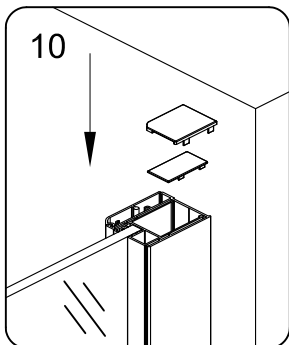
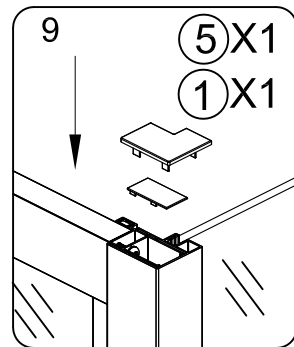
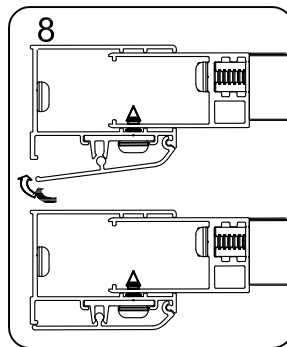
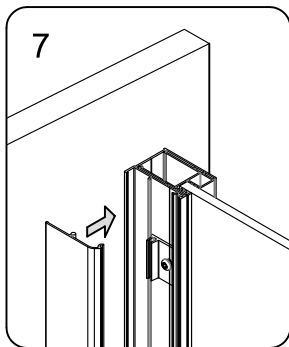
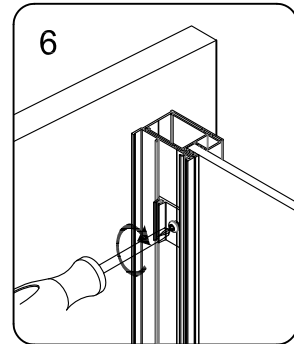
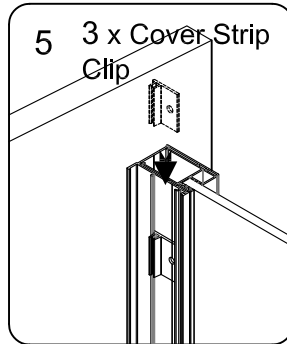
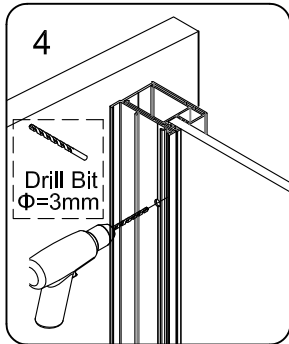
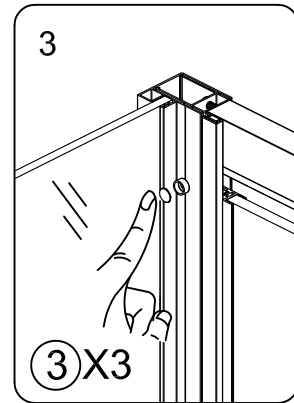
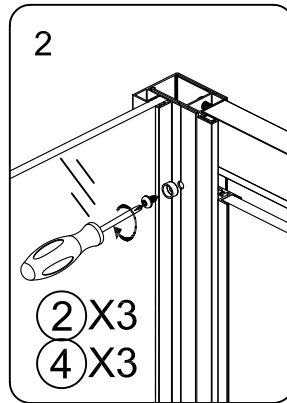
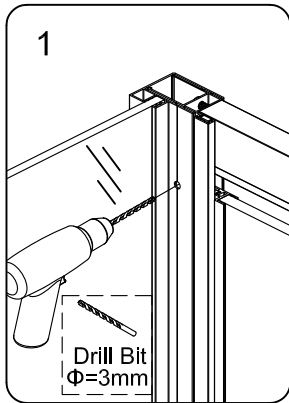


**!** Note: Push the corner profile onto the door profile as step 4 .

If you need further help please contact your local depot [www.ctb.co.uk](http://www.ctb.co.uk)

# Installation

## Inside View

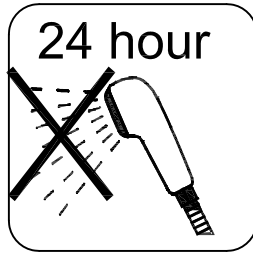


! Note: Parts not referenced are supplied with the door pack

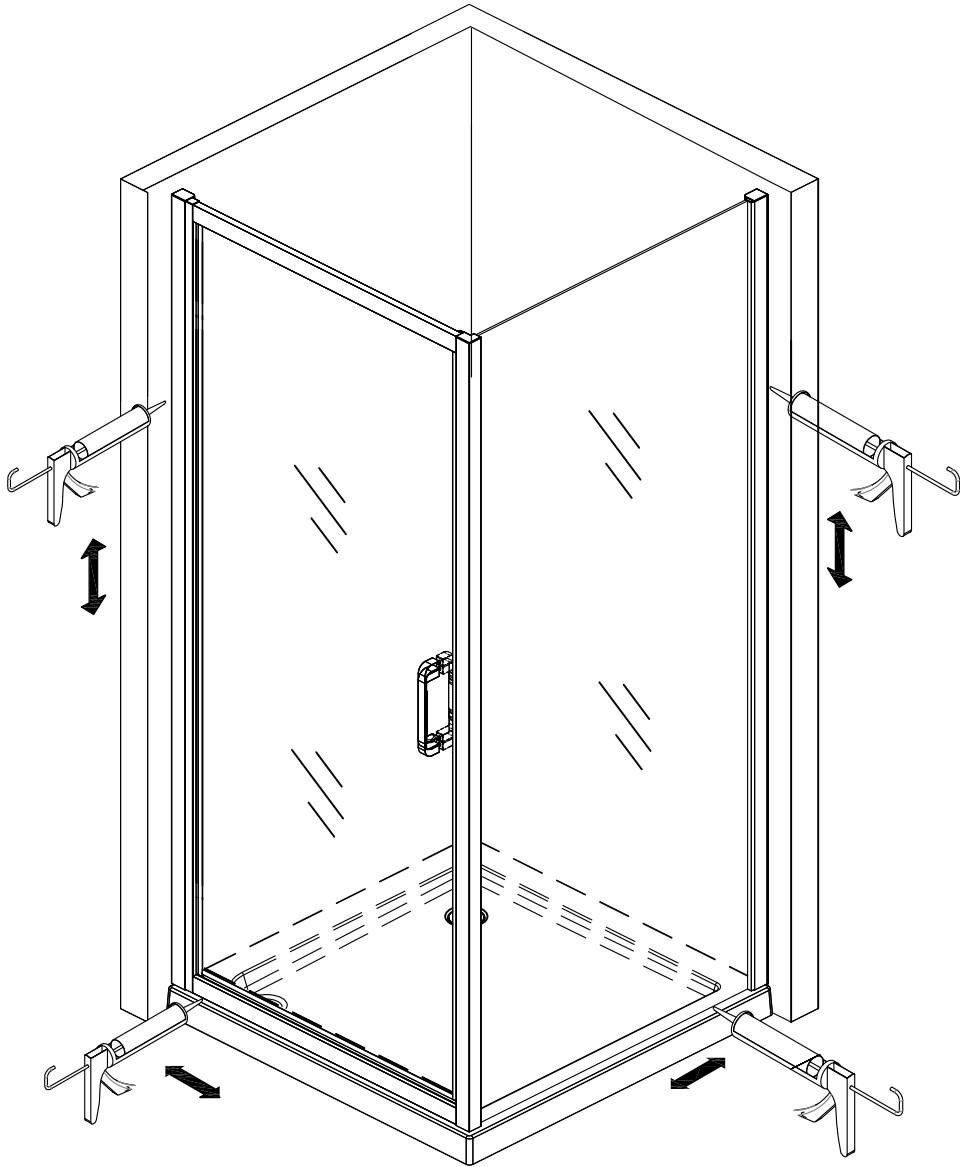
If you need further help please contact your local depot [www.ctb.co.uk](http://www.ctb.co.uk)

## Sealing

---



! Apply silicone between wall and wall channel, bottom rail and tray on the outside of the product.



---

If you need further help please contact your local depot [www.ctb.co.uk](http://www.ctb.co.uk)