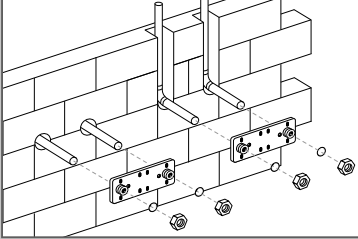
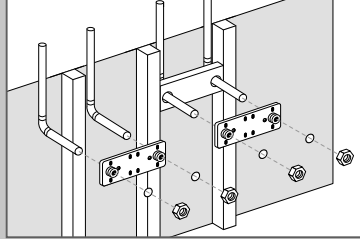


Important – Please Read

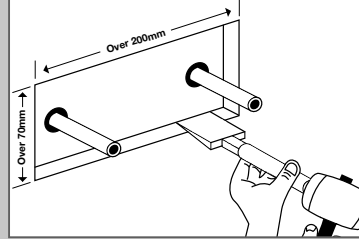
First Fix for Supply Pipes at 150mm Centres



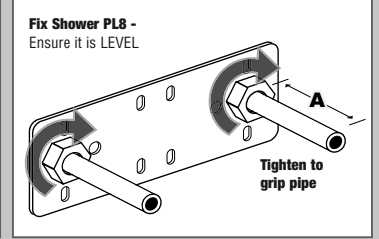
Block or brick wall -
Chase or drill through



Stud wall -
Fix to noggin or stud



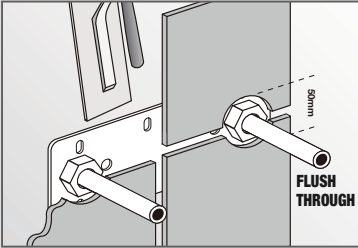
Rendered Wall -
Chase out recess
at least 200mm x 70mm x 15mm deep



Fix Shower PLB -
Ensure it is LEVEL

Use correct fixing screws (and wall plugs) for the wall structure (not supplied). **A** must be finished wall thickness + 60mm minimum

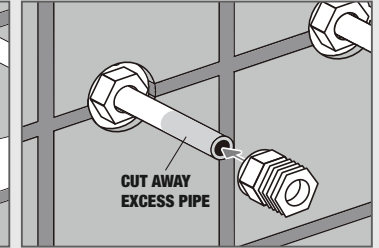
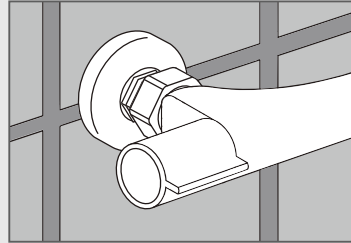
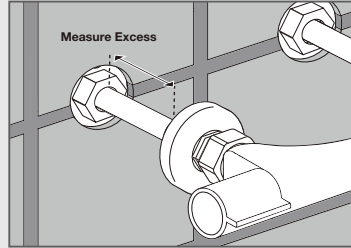
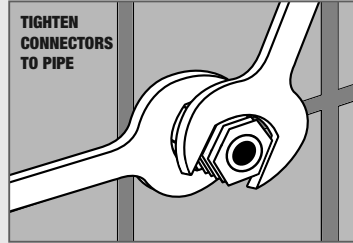
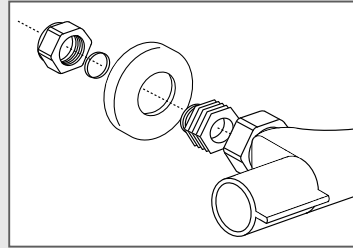
Decorate



Apply plaster and/or decorative finishes such as ceramic tiles.

Before fitting the shower mixer valve ensure pipe work is flushed through thoroughly.

Fit the Shower Mixer



Offer up the shower mixer and determine the finished pipe length to ensure the cover flanges will meet the wall.

Using a pipe slice cut away excess pipe and fit the shower mixer with the fittings supplied.

Always use 2 spanners to tighten the compression fittings on to the pipe.